

### Features

- Right angle for output terminal
- Compact multi-purpose filter
- Current rating 1A~15A
- Various output connections
- Practical solution for general devices

### Marketing Applications

- Measuring instruments
- Household application
- Energy management system
- Food processing equipment
- Gaming PC

### Numbering System

**1** SS2 **2** - L **3** **4** **5** - **6**

**1** Rated current

01,03,06,10,15

**2** Electrical schematic

Blank: standard

**3** Components value (refer Filter selection table)

S: Cx=0.1uF, Cy=2.2nF

B: Cx=0.1uF, Cy=3.3nF

**4** Grounded choke (optional)

G: Lg= 100uH

**5** Bleeder resistor (optional)

R: R= 1M ohm; 1/4W min.

**6** Output connections (refer Output terminal)

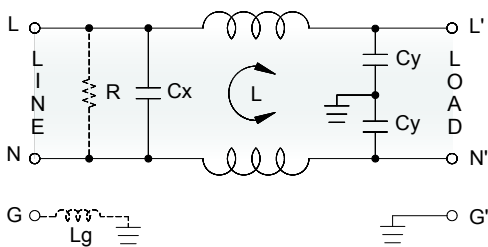
Q: fast-on tab (6.3mm)

S: solder tab (4mm)

W: with wired (100mm)

### Electrical Schematic •

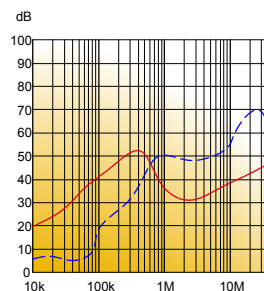
• Blank: standard



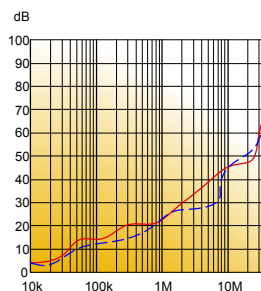
### Filter Attenuation

Insertion loss (dB) in 50 ohm system CISPR 17 (for reference only)

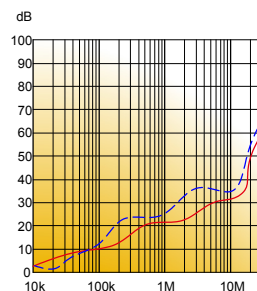
■ 1A~3A



■ 6A~10A



■ 15A



Common mode / Asymmetric (L-G) ————  
Differential mode / Symmetric (L-L) - - - - -

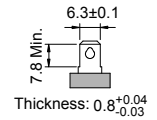
## Filter Selection Table ●

Filter Part No.	Rated Current @50°C [A]	Leakage Current @250VAC/50Hz [μA]	Inductance @10KHz,0.25V [mH]	Capacitance		Output terminal		
				C <sub>x</sub> [μF]	C <sub>y</sub> [nF]			
<b>Blank: standard</b>								
01SS2-LS..	1	450	6.5	0.1	2.2	-Q	-S	-W
03SS2-LS..	3	450	2.5	0.1	2.2	-Q	-S	-W
06SS2-LS..	6	450	0.8	0.1	2.2	-Q	-S	-W
10SS2-LS..	10	450	0.2	0.1	2.2	-Q	-S	-W
15SS2-LS..	15	450	0.2	0.1	2.2	-Q	-S	-W
01SS2-LB..	1	600	3.7	0.1	3.3	-Q	-S	-W
03SS2-LB..	3	600	1.8	0.1	3.3	-Q	-S	-W
06SS2-LB..	6	600	0.8	0.1	3.3	-Q	-S	-W
10SS2-LB..	10	600	0.3	0.1	3.3	-Q	-S	-W
15SS2-LB..	15	600	0.2	0.1	3.3	-Q	-S	-W

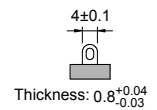
## Output Terminal

(unit: mm)

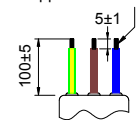
- **Q:** fast-on tab based on UL310 standard



- **S:** solder tab based on UL 310 standard

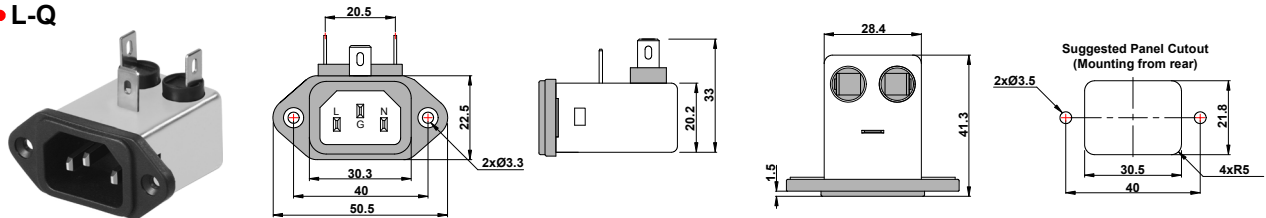


- **W:** with wired stripped and tinned



## Mechanical Drawing (unit: mm) ●

- **L-Q**



- **L-S**

